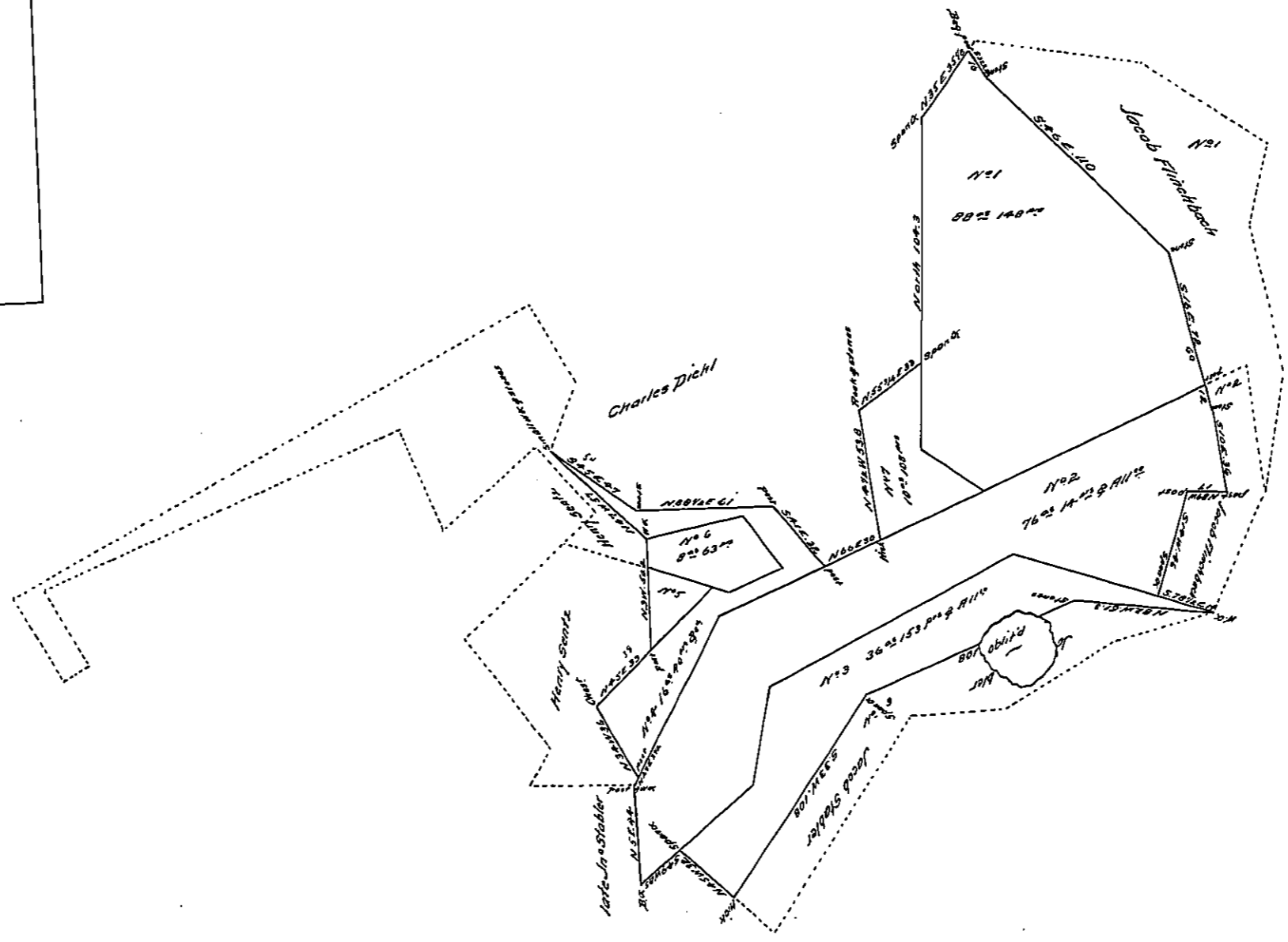


(Endorsement on back)
 Diagram of connection of
 Frederick Finckhbach's
 Jacob Feister & others
 land

Ref^d go 2^d Sept. 1829
 F.



A Diagram of connection of
 Frederick Finckhbach's land

Explanation

N ^o 1 part of tract surveyed on warrant to Jacob Feister dated 2 ^d May 1787	} 88° 22' 148"
N ^o 2 part of a tract surveyed on warrant to Andrew Feister (Alisa And ^o Phicster) dated 10 th June 1762	} 76° 22' 148"
N ^o 3 part of a tract surveyed on war- rant to Jacob Stabler & Frederick Finckhbach dated 17 th June 1793	} 36° 153"
N ^o 4 the whole of a tract surveyed on Warrant to Frederick Finckhbach dated 3 rd June 1829	} 16° 40"
N ^o 5 part of a tract surveyed on Warrant to David Straid dated 13 th May 1783	} 2° 47"
N ^o 6 part of a tract surveyed on Warrant to David Straid dated 31 st March 1788	} 8° 63"
N ^o 7 the whole of a tract surveyed on Warrant to Charles Dicht dated 19 th August 1814	} 15° 100"
	239. 83

York Co.

Isaac Kirk D.S.

In Testimony, That the above is a copy of the original remaining on file in the Department of Internal Affairs of Pennsylvania, made conformably to an Act
 of Assembly approved the 18th day of February, 1833, I have hereunto set my Hand and caused the Seal of the said Department to be affixed,
 at Harrisburg, the twenty-fifth day of July 17. 1841.

Nancy Houser
 Secretary of Internal Affairs.